



300 - 1.400 Nm

MAX SPEED 10 RPM

AUTO REACTION ARM BACK OFF

BRUSHLESS MOTOR

DOUBLE SAFETY TRIGGER

OPTION

SPECIFICATIONS

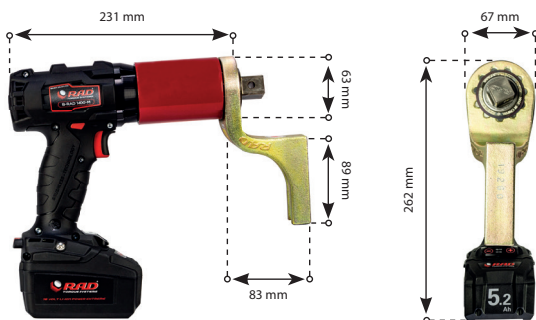
- **TORQUE RANGE:** 300 - 1.400 Nm
- **SPEED:** 10 RPM
- **WEIGHT:** 3,5 Kg with battery, excluding reaction arm and impact socket
- **SQUARE DRIVE:** 3/4 inch square drive
- **BATTERY:** Two 18V Li-ion batteries 5.2 Ah/93 Wh
- **NOISE LEVEL:** Maximum 65 dB
- **REPEATABILITY ON SAME JOINT*:** +/- 3%.

*Test results from RAD's certified calibration lab

SUITABLE REACTION ARMS

Standard	Deep socket	Double ended
PN: 19260	PN: 13367	PN: 13368
Blank	Double ended blank	Safety sliding
PN: 13364	PN: 13365	PN: 25243

DIMENSIONS IN MM



TOOL KIT INCLUDING

- B-RAD SELECT 1400
- Standard reaction arm (PN: 19260)
- Two retaining rings (PN: 12733)
- Two batteries with quick charger
- Calibration certificate
- Usermanual
- Safety instructions on USB stick
- Weatherproof storage case.



IMPERIAL VERSION

- **MODEL:** B-RAD SELECT 1000
- **PART NUMBER:** 28285
- **TORQUE RANGE:** 200 - 1000 ft.lbs
- **WEIGHT:** 7.8 lbs.



Non Impacting



Safe & Reliable



Lithium-ion battery



According to European standards



LABORATORY ACCREDITATION BUREAU
ACCREDITED ISO/IEC 17025
Accredited ISO/IEC 17025

Drop prevention

Product number	Model
200476	B-RAD Drop prevention



Battery pack

Product number	Model
200473	8.0 Ah LiHD battery pack



Double Safety Button

Product number	Model
25949	Double Safety Button

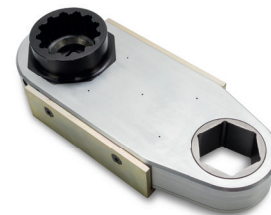


CX Offset Gearboxes

Product number	Model	Max output	Ratio
27978	Hex 50 mm	3400 Nm	1:1
28540	Hex 65 mm	5000 Nm	1:1

Product number	Suitable for	Gearbox
11537	B-RAD SELECT 275 & 475	27978
16155	B-RAD SELECT 700 & 1400	27978
26994	B-RAD SELECT 2000	27978
27853	B-RAD SELECT 4000	27978
28531	B-RAD SELECT 4000	28540

Hex reducer on request.



Impact Sockets

Product number	Hex size	Square drive	Bolt size	Suitable for
200187	17MM	3/4"	M10	B-RAD SELECT 275
200219	19MM	3/4"	M12	B-RAD SELECT 275
200189	22MM	3/4"	M14	B-RAD SELECT 275
200190	24MM	3/4"	M16	B-RAD SELECT 275, 700 & 1400
200210	27MM	3/4"	M18	B-RAD SELECT 275, 700 & 1400
200211	30MM	3/4"	M20	B-RAD SELECT 700 & 1400
200212	32MM	3/4"	M22	B-RAD SELECT 700 & 1400
200004	36MM	3/4"	M24	B-RAD SELECT 700 & 1400
200215	38MM	3/4"	M24	B-RAD SELECT 1400
200005	41MM	3/4"	M27	B-RAD SELECT 1400
200006	46MM	3/4"	M30	B-RAD SELECT 1400
200216	50MM	3/4"	M33	B-RAD SELECT 1400
200227	36MM	1"	M24	B-RAD SELECT 2000 & 4000
200229	41MM	1"	M27	B-RAD SELECT 2000 & 4000
200230	46MM	1"	M30	B-RAD SELECT 2000 & 4000
200007	50MM	1"	M33	B-RAD SELECT 2000 & 4000
200008	55MM	1"	M36	B-RAD SELECT 2000 & 4000
200009	60MM	1"	M39	B-RAD SELECT 4000
200238	55MM	1,5"	M36	B-RAD SELECT 7000
200297	60MM	1,5"	M39	B-RAD SELECT 7000
300052	70MM	1,5"	M45	B-RAD SELECT 7000
200197	75MM	1,5"	M48	B-RAD SELECT 7000
200241	80MM	1,5"	M49	B-RAD SELECT 7000
200298	90MM	1,5"	M52	B-RAD SELECT 7000



Nose extension series

Product number	Model	Reaction arm	Length
14195	B-RAD SELECT 1400	13512	324 mm
14200	B-RAD SELECT 1400	13512	400 mm
14205	B-RAD SELECT 1400	13512	476 mm
18185	B-RAD SELECT 2000	20153	349 mm
19058	B-RAD SELECT 2000	20153	400 mm
19059	B-RAD SELECT 2000	20153	476 mm
27641	B-RAD SELECT 4000	13484	305 mm
27643	B-RAD SELECT 4000	13484	381 mm
27651	B-RAD SELECT 4000	13484	457 mm



Swivelling tool handle & hanger

Product number	Suitable for
19827	B-RAD SELECT 275, 700 & 1400
19825	B-RAD SELECT 2000
26751	B-RAD SELECT 4000
26674	B-RAD SELECT 7000

